

The Sensory-Cognitive Foundation for Learning



IMPACT REPORT: 2020-2024



A MESSAGE FROM OUR EXECUTIVE DIRECTOR:

IMPACT SNAPSHOT:

21

Scholarships
Awarded

TOTALLING:

2,420

One-to-One
Instructional
Sessions

IN:

19

Learning Centers
(2 International,
16 US locations)

Every day, thousands of children and adults struggle to overcome learning weaknesses in reading and oral and written language comprehension. These difficulties affect how they connect with and communicate with the world around them, impacting their educational opportunities, social and interpersonal interactions, career possibilities, and quality of life.

With the right instruction focused on developing critical sensory-cognitive functions for learning, we know these individuals can learn to their potential. However, many are faced with financial hardships and lack of resources making it nearly impossible for them gain access to the critical learning solutions they need.

The Sensory-Cognitive Foundation for Learning is dedicated to providing learning opportunities to these students by providing scholarships to receive life-changing instruction at Lindamood-Bell. Students can benefit from this remarkable instruction at Learning Centers in the US, UK, Australia, or through live, online instruction which has empowered us to expand our reach and make an even greater impact for students.

Thanks to the 400 generous donors and supporters who share in our urgency to make a difference, we have awarded 21 scholarships to help individuals with significant learning challenges including dyslexia, attention-deficit hyperactivity disorder (ADHD), or autism spectrum disorder. These students range in age from 6 to 54 and come from diverse backgrounds and geographic locations. All have a profound need for help. It is our greatest honor to support these individuals and families.

As we continue to expand our reach, please take a moment to review this Impact Report which recognizes the life-changing impact we have made, while highlighting our current fundraising initiatives and new community partnership opportunities. I invite you to join us!

Let's keep in touch!

Sincerely,
Angelica Benson

Angelica Benson, Ed.M.
Executive Director
Angelica@thescfoundation.org

OUR STUDENTS AND FAMILIES

Students In Need:

- History of school failure
- Negative learning experiences
- Learning disability, ADHD, Autism Spectrum Disorder
- Social/communication challenges
- Behavior and coping skill difficulties
- Developmental delay
- Medical issues/conditions
- Anxiety
- Depression and hopelessness
- Underepresented and minority populations
- Limited leadership, professional, career opportunities

Families In Need:

- History of financial need
- Unemployment
- Single parent Income
- Divorce
- Illness or chronic health issues
- Lack of appropriate schooling options
- Poor quality educational services
- Mental health needs
- Inadequate housing or homelessness
- Intergenerational poverty

The Challenge:

1 in 5 children in the United States have a learning disability (Source: National Center for Learning Disabilities)

There is an unmet educational need for thousands of students who struggle daily with literacy, learning, communication, and problem solving skills

Many of these students have weak or underdeveloped sensory-cognitive processes essential for learning

Traditional teaching, classroom instruction, tutoring, or specialized learning programs are often not enough to develop the underlying sensory-cognitive processes required for learning

Access to critical diagnostic and educational services is limited for many families in financial need, which is especially concerning given that early intervention shows the most promising outcomes

These obstacles have a detrimental effect on students' educational success, social and interpersonal interactions, mental health and well-being, and career and future aspirations

"When are you so far behind that you just lose hope?" -Scholarship Applicant, 2020



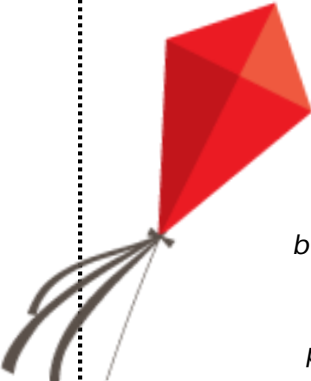
A Solution: Life-Changing Instruction

Scholarships provide students with a one-of-a-kind opportunity to receive critical, evidence-based instruction from Lindamood-Bell, an educational industry leader with 40 years of instructional expertise helping thousands of students using the latest scientific findings about how the brain learns.

This instruction is built on a groundbreaking methodology that explicitly develops the sensory-cognitive foundation for learning which is the basis for language comprehension, reading, and learning independence.

Peer-reviewed published results and behavioral and neurologic research demonstrates learning improvements for students affected by mild, moderate, and severe learning difficulties, including specific learning disorders, dyslexia, hyperlexia, or autism spectrum disorder after receiving sensory-cognitive instruction. (Source: <http://lindamoodbell.com/research>)

IMPACT STORIES:

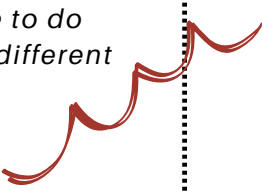


*"In our daughter's first session she went from hardly knowing letters to reading many words in 12 weeks."
- Scholarship recipient, Minnesota (2024)*

*"The transformation in our student's learning and confidence has been nothing short of remarkable. Since completing his program, he has been on the honor roll for two consecutive quarters in his 6th grade year. This achievement speaks volumes about his academic progress and the positive impact of Lindamood-Bell's instruction."
-Scholarship recipient, California (2022-23)*

*"My daughter now enjoys reading. She started the program reading at a pre-k level but could read at a 6th grade level by the end of the program. We would never have been able to afford this program without the scholarship and being able to read has been life changing."
- Scholarship recipient, New York (2022)*

*"This scholarship was life changing for our daughter. She struggled in school from their very beginning. Now, most days, she sits in class confident and able to do most of her language arts assignments independently. She is a completely different little girl. She is confident and loves to learn."
-Scholarship recipient, Indonesia (2021)*



IMPACT SUMMARY:

Funds raised: \$289,287

Number of donors: 415

Scholarships awarded: 21 (17 for instruction, 4 for learning assessments)

Age of recipients: 6 to 54


Sensory-cognitive instruction: 1-to-1, 2-4 hours daily, 5 days per week

Number of instructional sessions gifted: 2420

Reading improvements: at least 1 grade equivalency (15 students)

Comprehension improvements: at least 2 grade equivalencies (2 students)

Geographic reach: 21 cities, 19 Learning Centers, 3 countries (US, Australia, Indonesia)

Scholarship Year	Geographic Reach: Learning Center Locations	Learning Impact: Sensory-Cognitive Instruction
2020: 4 students (grades 2 - 5)	Learning Centers: <ul style="list-style-type: none"> • Pasadena, CA • Weston, FL • Westwood, CA • Hong Kong 	<ul style="list-style-type: none"> • Before reading instruction: students were 1 to 3 grade equivalencies behind • After instruction: students improved 1 to 3 grade equivalencies
2021: 4 students (grades 3 - 6, adult)	Learning Centers: <ul style="list-style-type: none"> • Brooklyn, NY • Denver, CO • New York City, NY • San Francisco, CA 	<ul style="list-style-type: none"> • Before reading instruction: 2 students were 1 to 3 grade equivalencies behind • After instruction: students improved 1 to 4 grade equivalencies • Before comprehension instruction: 2 students were 4 or more grade equivalencies behind • After instruction: students improved nearly 2 to 3 grade equivalencies
2022-2024: 9 students (grades 1-5, 7-8, 12)	Learning Centers: <ul style="list-style-type: none"> • Berkeley, CA • Denver, CO • Double Bay, Australia • Jacksonville, FL • Pasadena, CA • Portland, OR • Scottsdale, AZ • Twin Cities, MN • Washington, DC 	<ul style="list-style-type: none"> • Before reading Instruction: 9 students were between 1 and 7 grade equivalencies behind in reading • After instruction, students made statistically significant growth, improving 1 to 4 grade equivalencies 



IMPACT STORY: MEET PERLA, SCHOLARSHIP RECIPIENT (2020)



"My daughter's experience was incredible. Perla really enjoyed the instruction. She went from being a nonreader to a beginning 2nd grade level. The scholarship gave her an opportunity that we would've never been able to give her."

- Perla's Mom

NEW FUNDRAISING INITIATIVES

Scholarships to help students learn...for life!

In response to the urgent needs shared by hundreds of students and families, we are launching three important fundraising initiatives to provide scholarships to students with learning challenges and who are most impacted by: (1) mental health needs, (2) dyslexia, or (3) barriers to learning/learning loss. Please consider a donation to support these initiatives and help students like Perla who need it the most.

#1

Mental Health and Wellness - CONNECT To Learn

- Focus on students with a learning difficulty and a co-occurring mental health need

#2

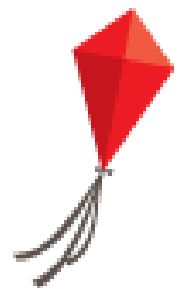
Dyslexia - REACH For The Stars

- Focus on students with significant reading weaknesses, nonreaders, or students with dyslexia

#3

Barriers to Learning and Learning Loss - SOAR To The Sky

- Focus on students affected by barriers to learning and learning loss



The Sensory-Cognitive Foundation for Learning



OPPORTUNITIES FOR IMPACT: COMMUNITY AND CORPORATE PARTNERSHIPS

Partnership	Giving Level	Impact
Inspiration	Silver: \$2,500 Gold: \$5,000	Donation to Scholarship Starter Fund
Champion	Up to \$10,000	Scholarships for up to 1-2 students
Advocate	Up to \$25,000	Scholarships for up to 3 students
Legacy	Up to \$50,000	Scholarships for up to 5 students
Lifetime	Up to \$75,000+	Scholarships for up to 8 students

For Impact Partnership information, contact Angelica Benson: angelica@thescfoundation.org


LIFE-CHANGING INSTRUCTION

Your donation **will** make a meaningful impact. Behavioral and neurologic research reveals students can learn to their potential with sensory-cognitive instruction designed to address specific reading and language comprehension weaknesses. Source: <https://lindamoodbell.com/research>

These learning improvements directly impact academic and career outcomes, leading to increased engagement and participation in social, educational, and civic pursuits and overall improvement in emotional wellbeing and quality of life.



We need your
generous *support.*

The
Sensory-Cognitive
Foundation
for Learning 

Thank you

to all our donors,
volunteers, and
community supporters,
including:

Nanci Bell
Robert Cardiff & Family, Friends, Colleagues
PMR Foundation
Gander Publishing
The Wichman Family
Casual For A Cause Donors
Cisco Matching Partners Program
Lindamood-Bell Learning Processes
Individual Supporters & Donors from Lindamood-Bell
Central Coast of California Arabian Horse Association



info@thescfoundation.org



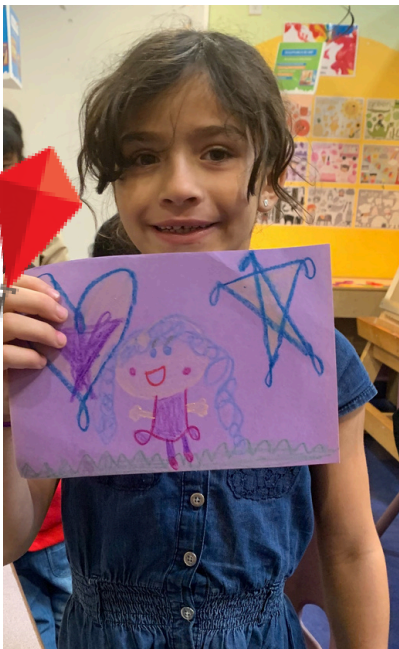
www.thescfoundation.org



416 Higuera Street
San Luis Obispo, CA 93401-3833



805-541-1289



"Giving to the SC Foundation's scholarship program allowed me to truly make a meaningful difference. There is no greater gift than the gift of learning!"

-Parent, Educator, and Donor

The Sensory-Cognitive Foundation for Learning is a 501(c)(3) organization operating under Tax Identification Number 83-2012785

